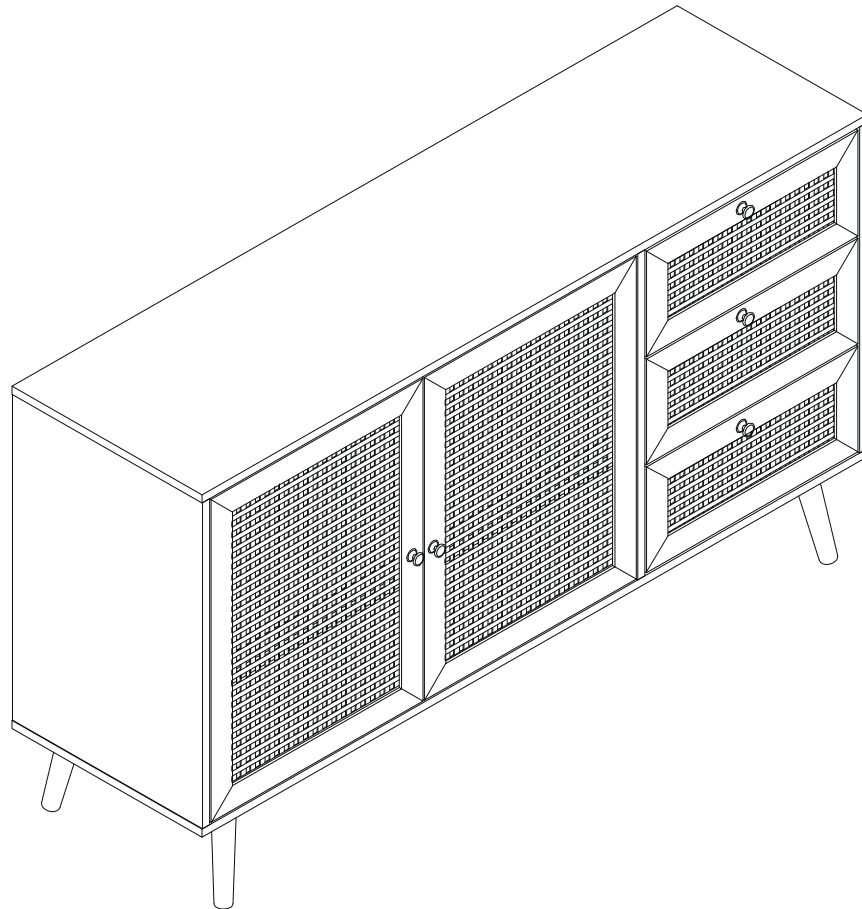


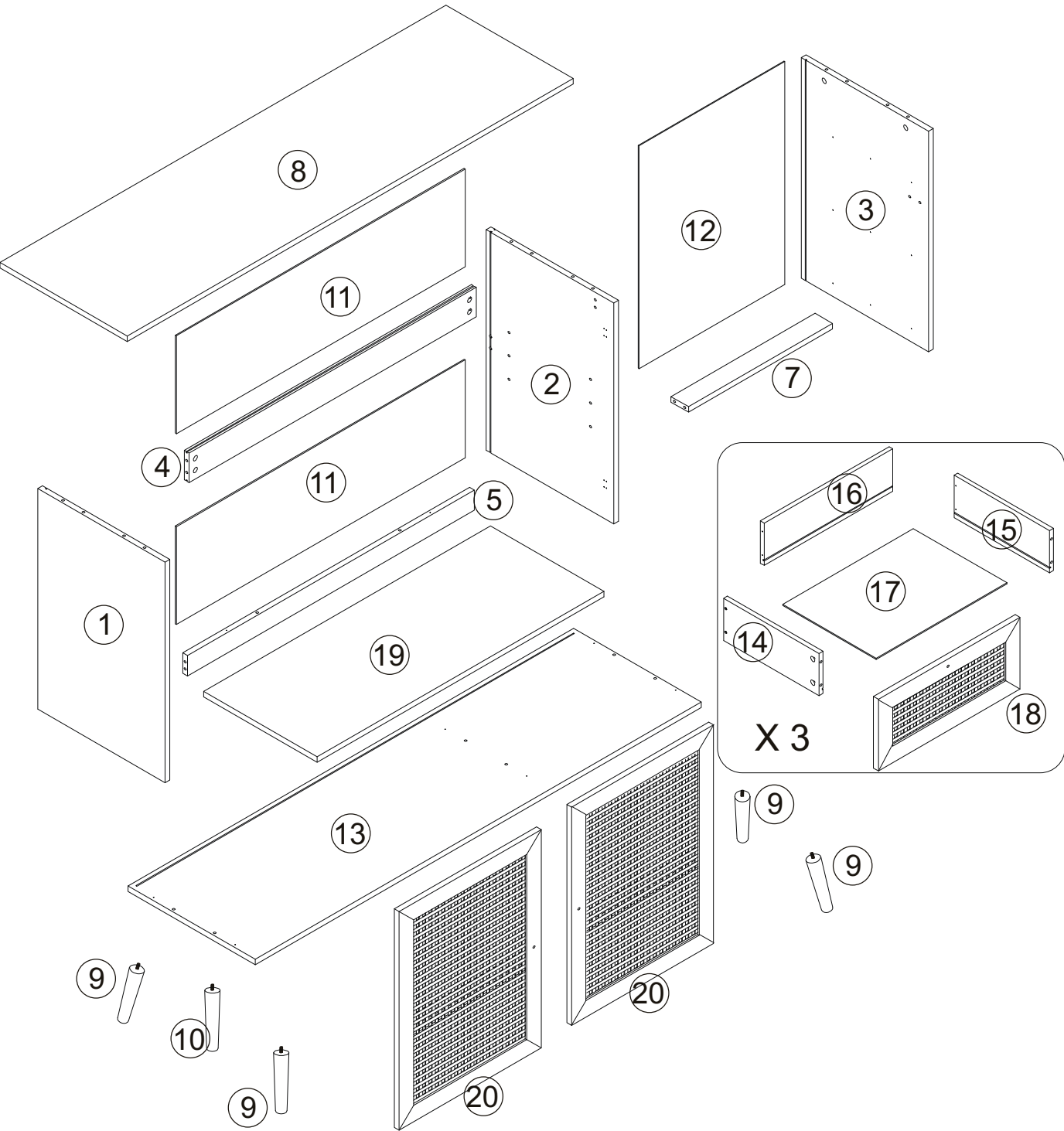
BLŪ
west



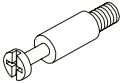

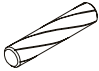


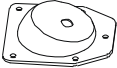

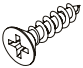
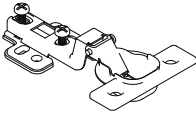
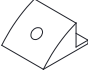

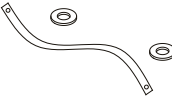
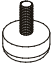
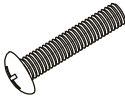

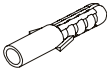
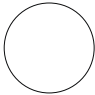
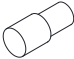
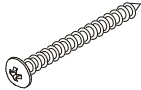

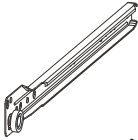
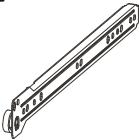
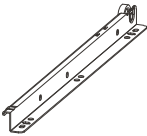
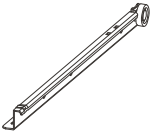
ASSEMBLY INSTRUCTION

81206.Z.02

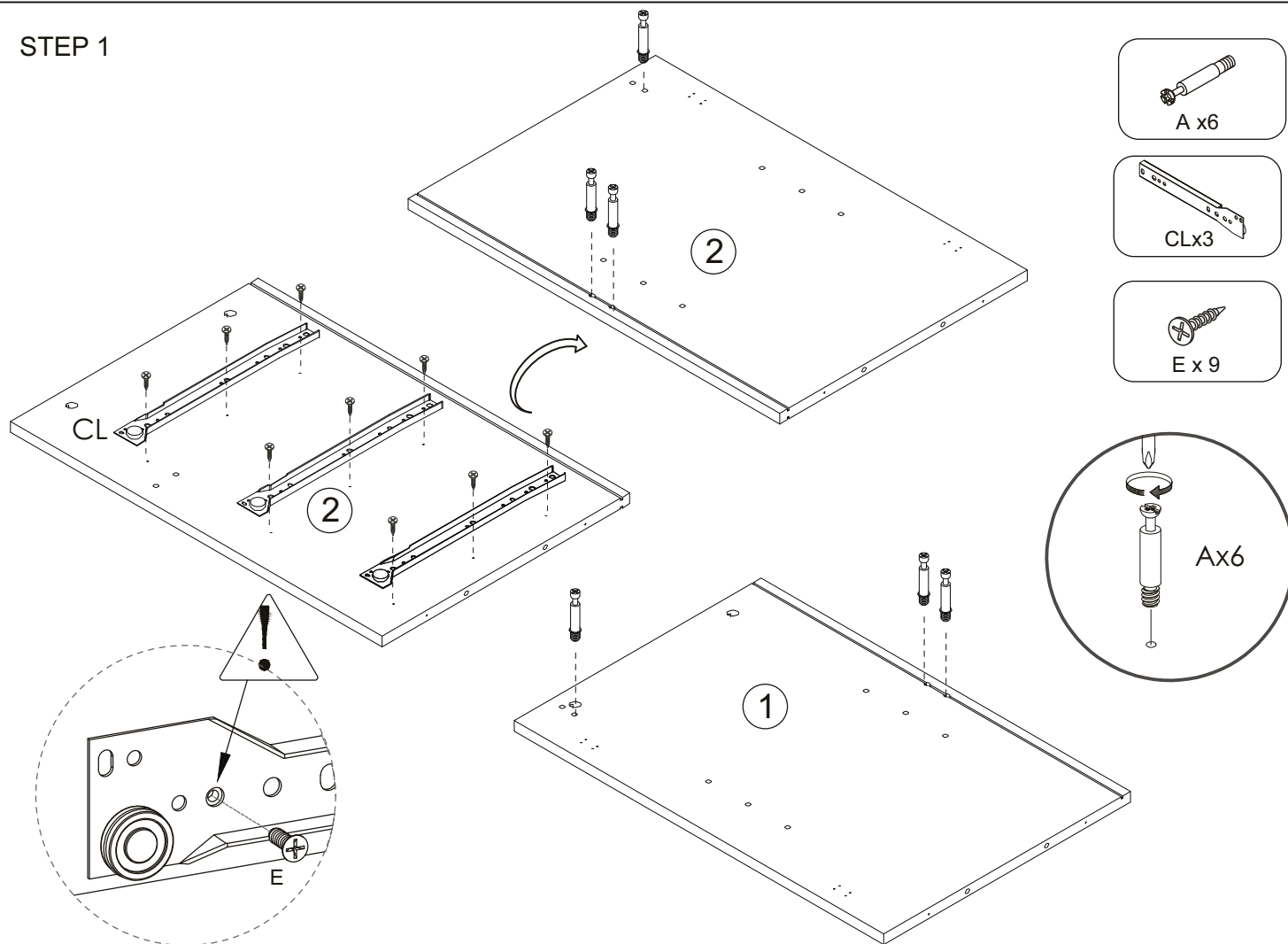
PARTS LIST



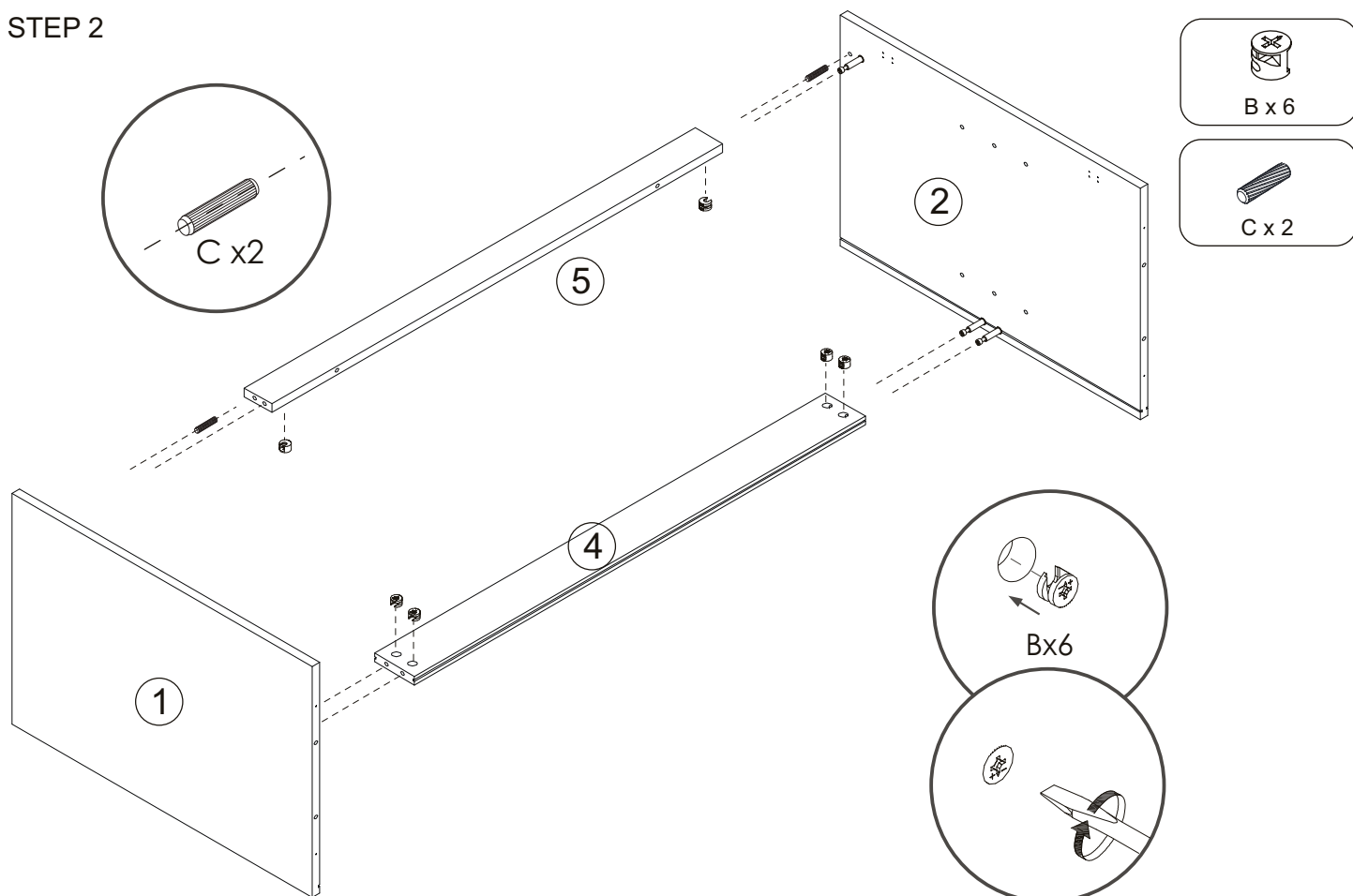
Hardware:

A M6*36 mm  x26	B M15*10 mm  x26	C M5.8*30 mm  x18	D M4*35mm  x8	E M3.5*12 mm  x36
F  x4	G M4*14 mm  x22	H M4*14 mm  x24	I  x4	J  x12
K M3*16 mm  x12	L  x2	M  x1	N M4*16mm  x5	O  x5
P  x2	Q  x4	R  x4	S M4*50 mm  x4	T M4*30mm  x12
(CL)  x3	(CR)  x3	(DL)  x3	(DR)  x3	

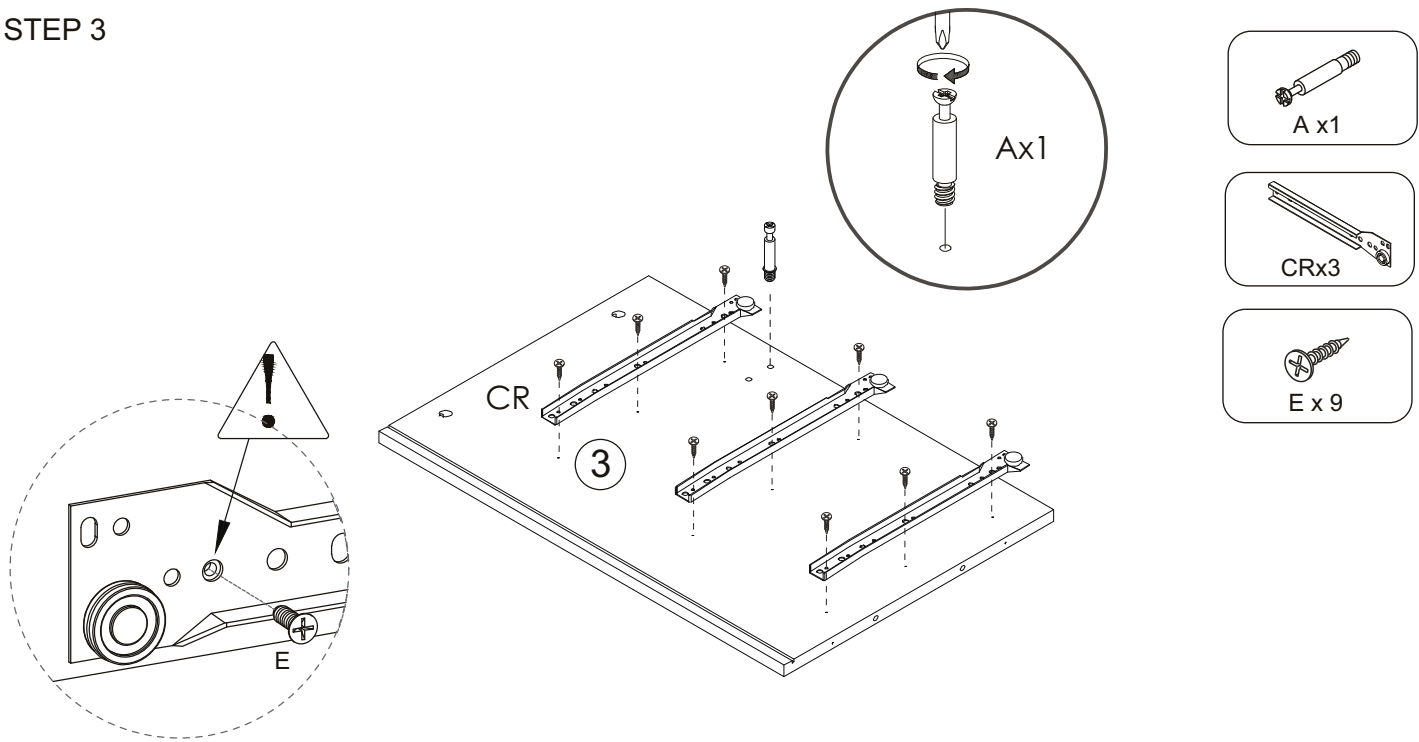
STEP 1



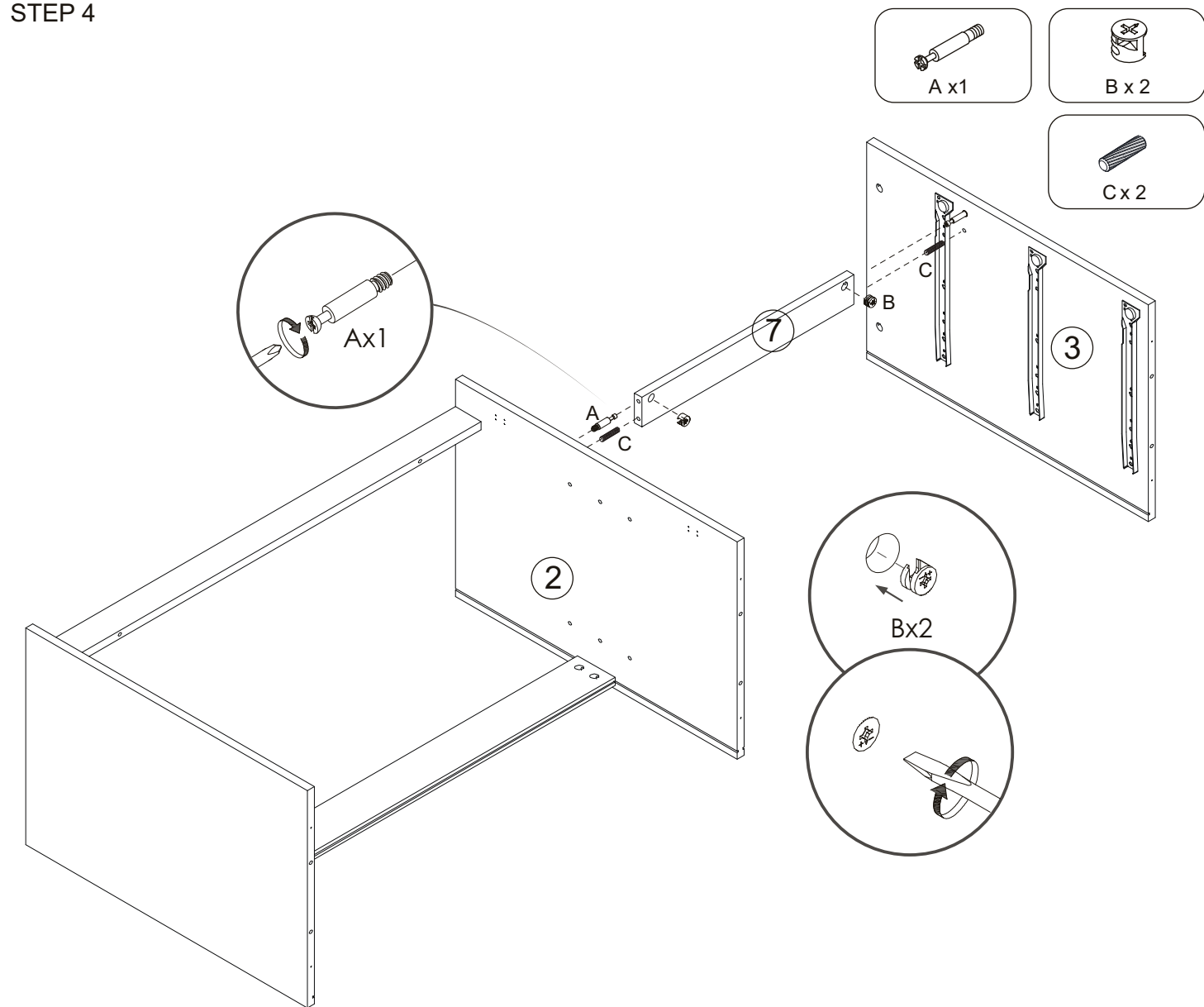
STEP 2



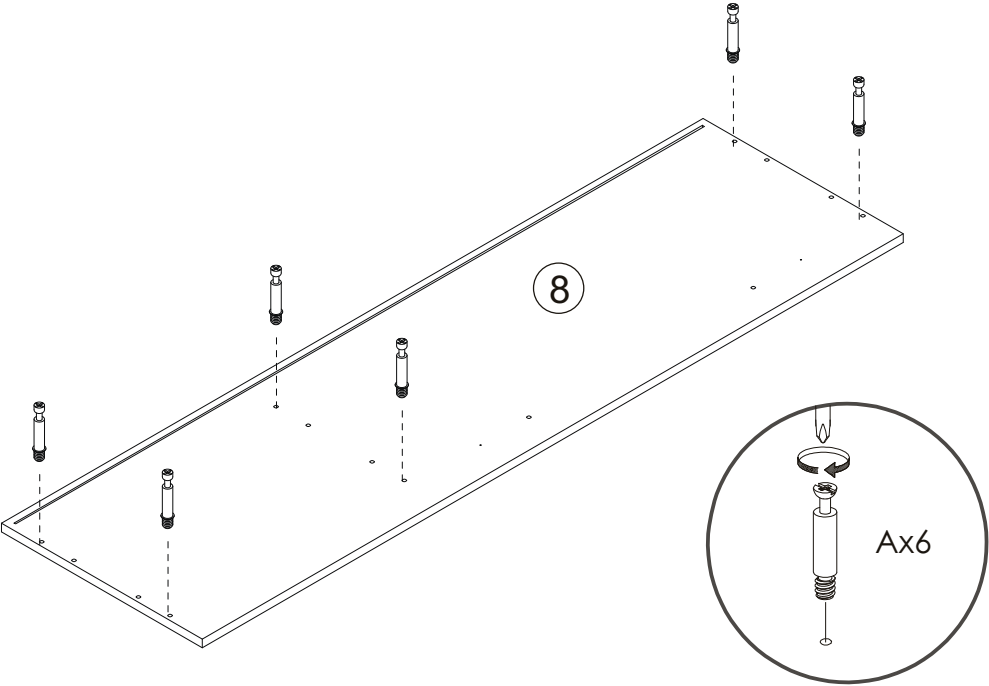
STEP 3



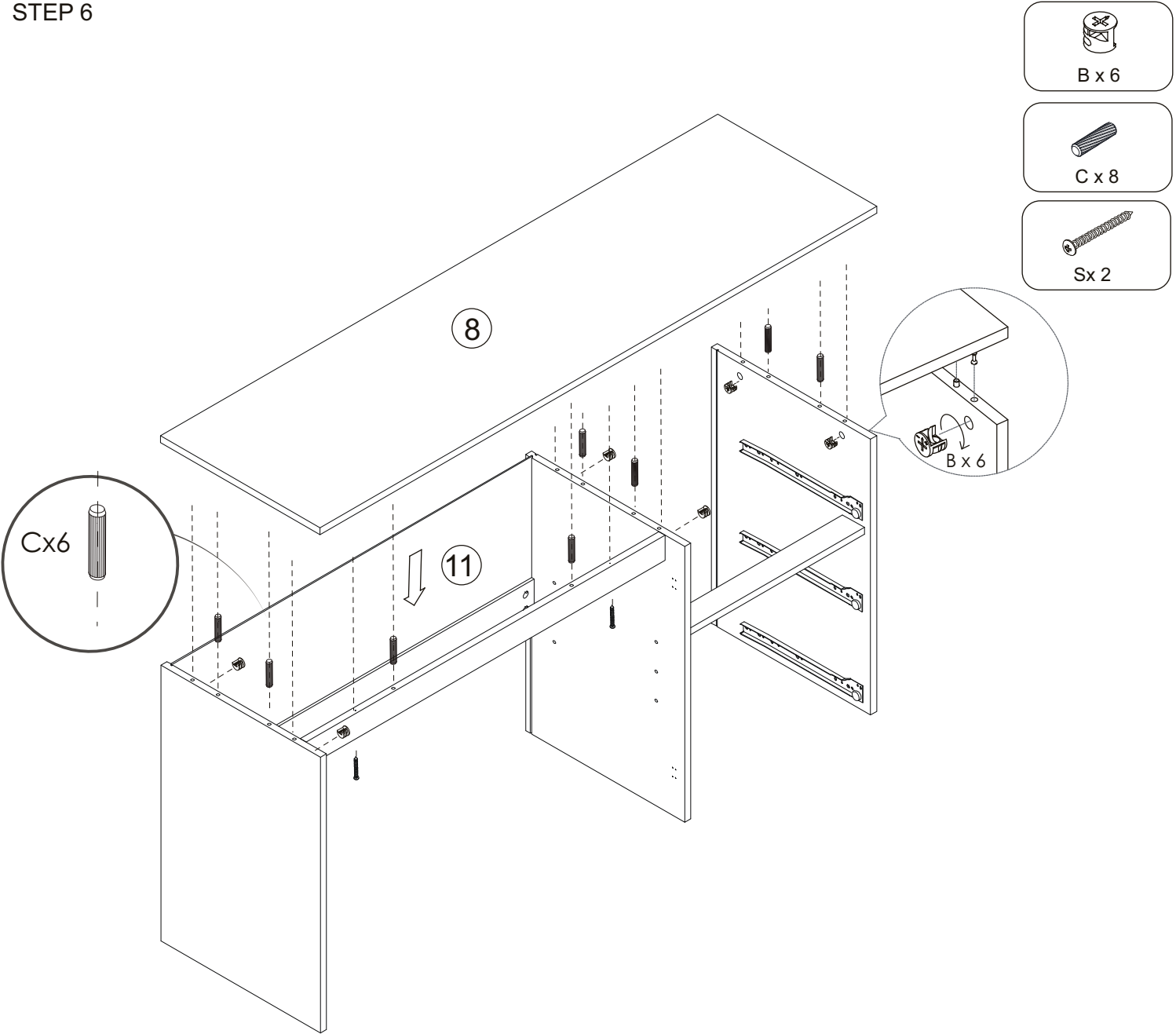
STEP 4



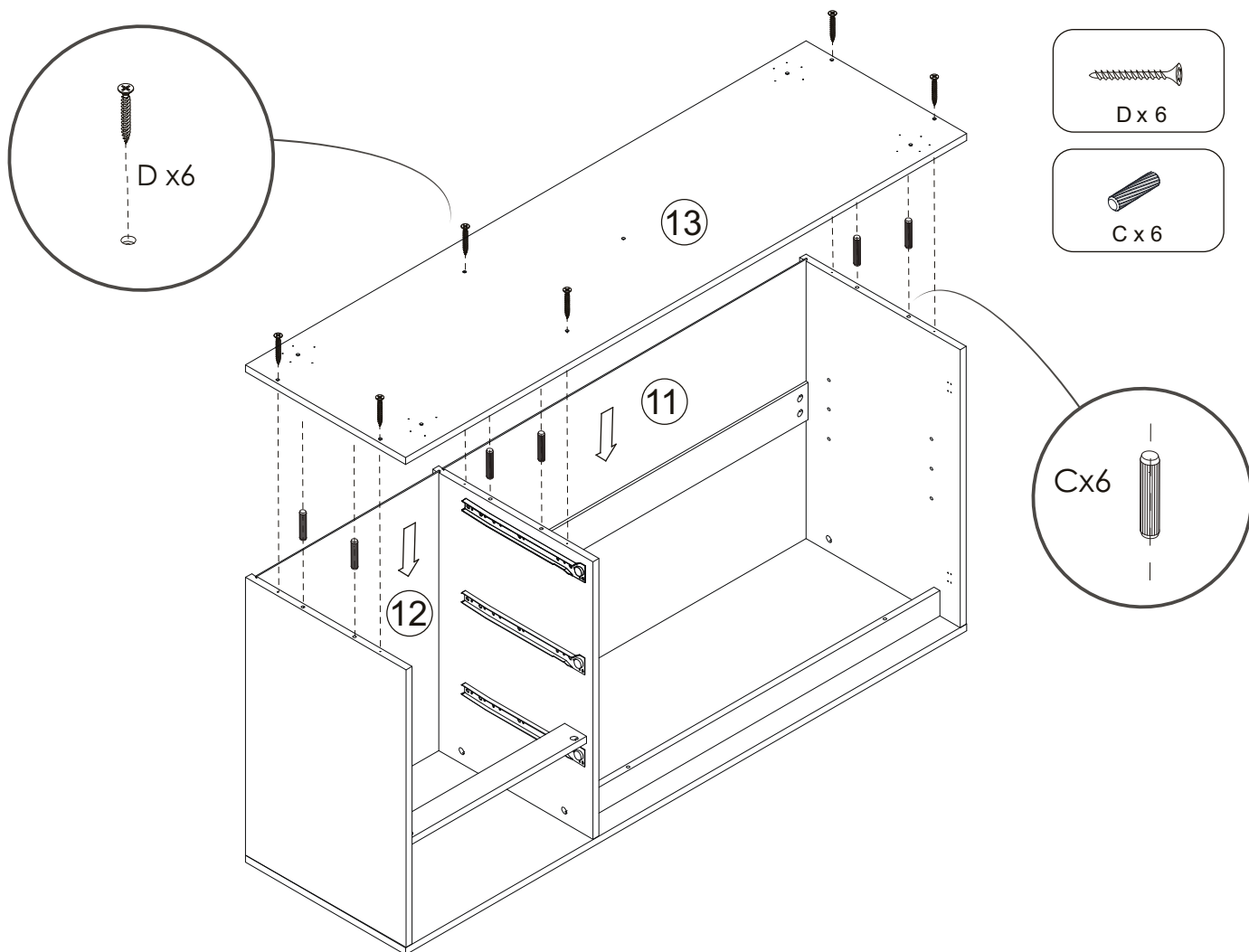
STEP 5



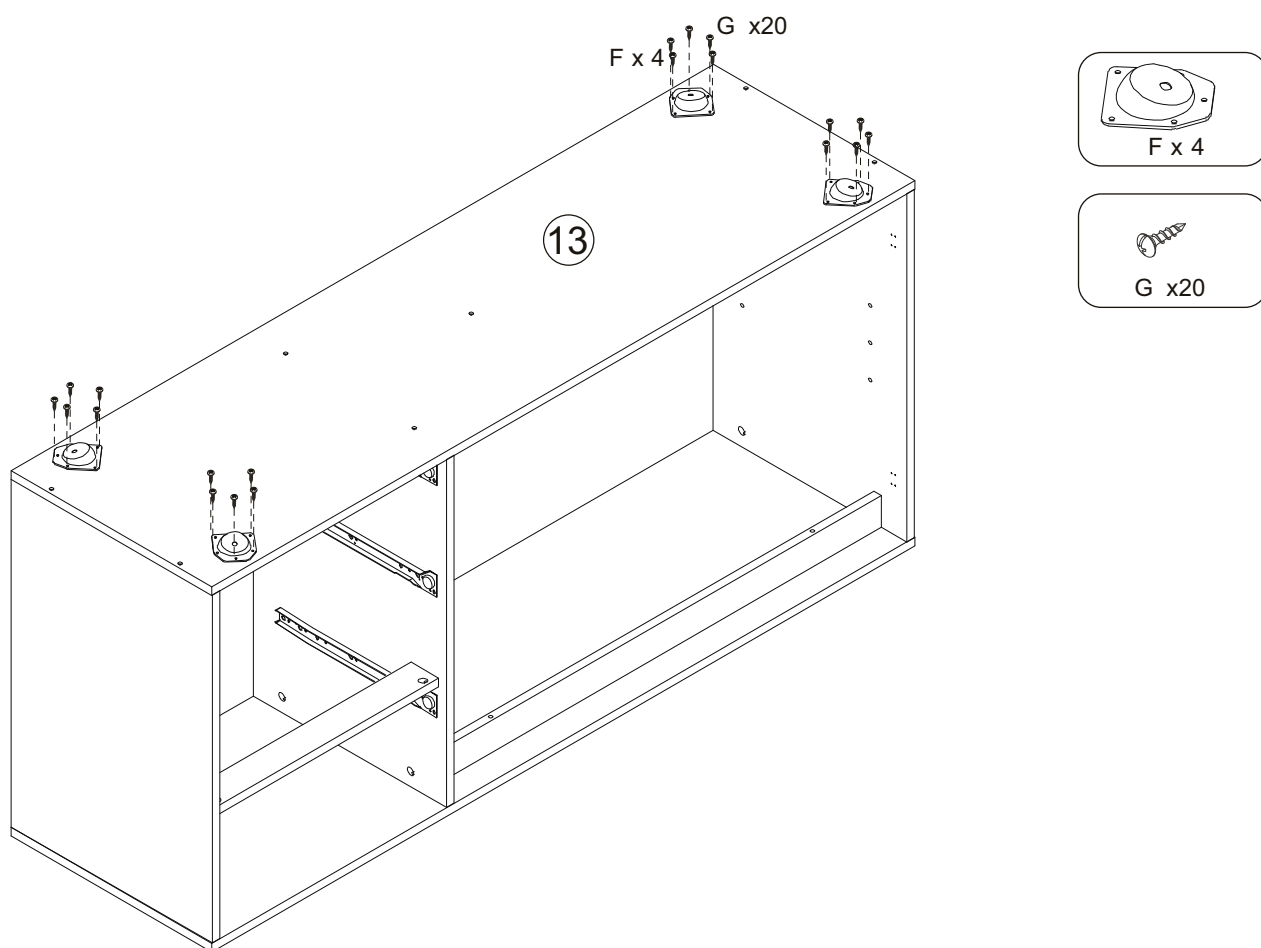
STEP 6



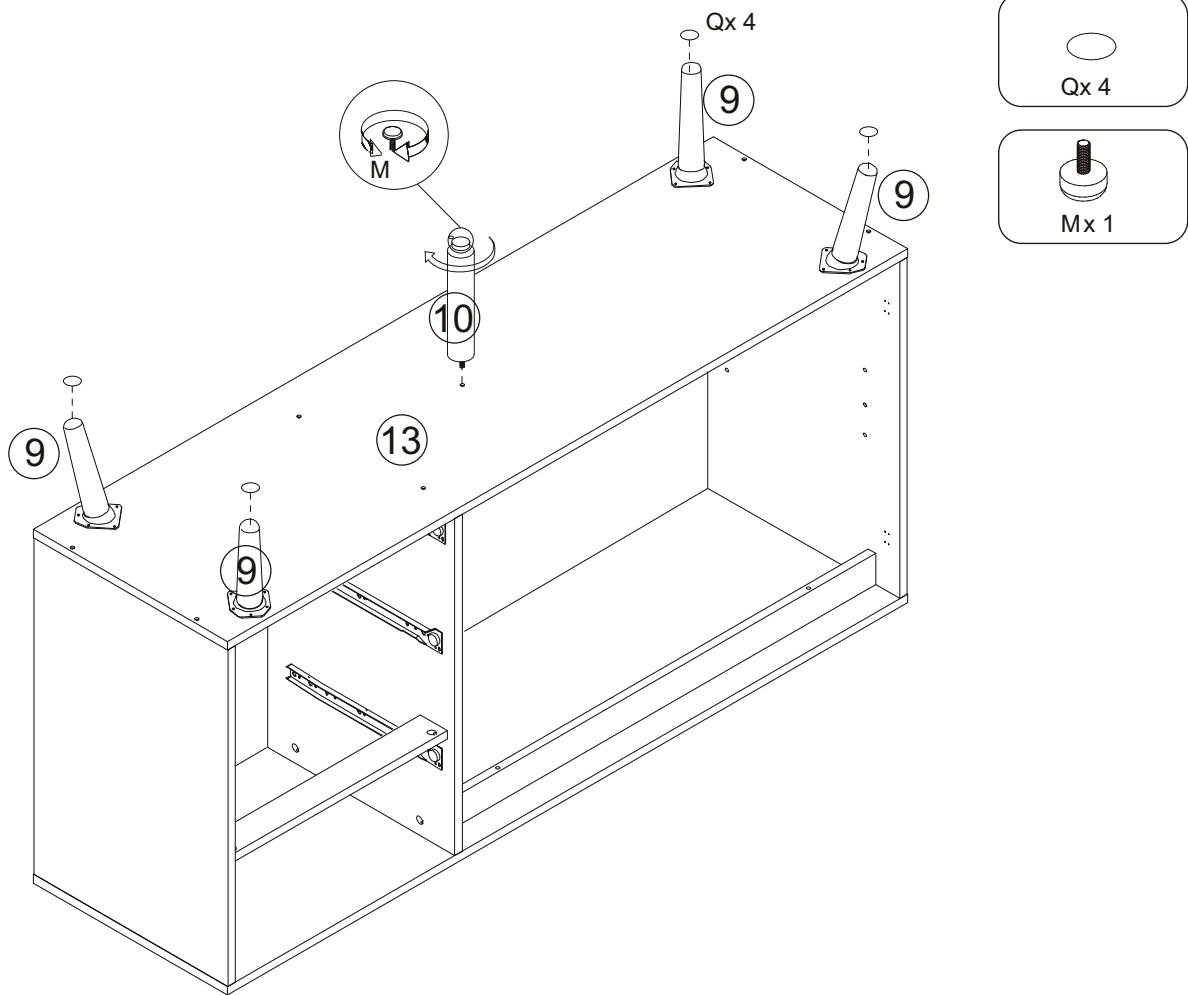
STEP 7



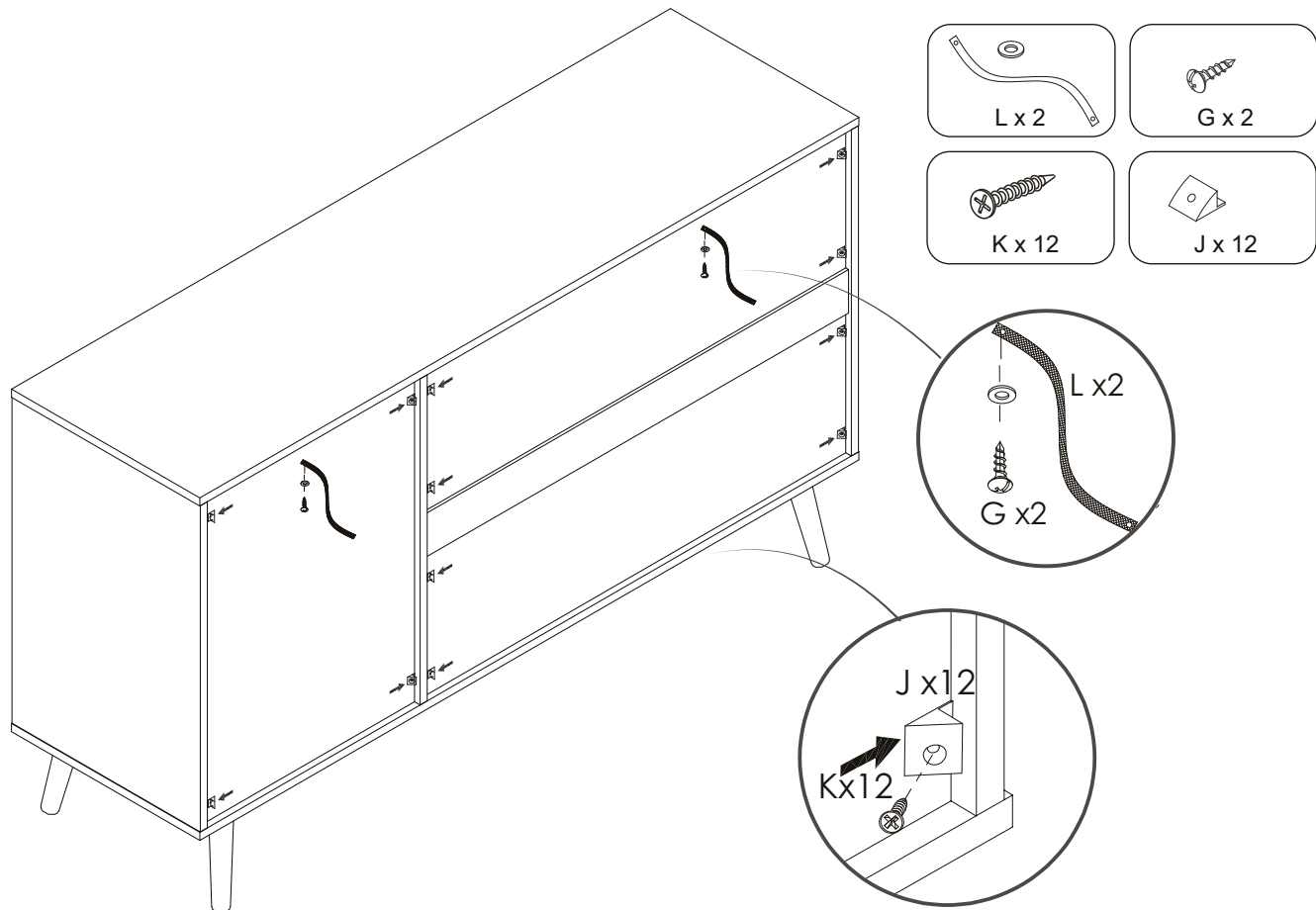
STEP 8



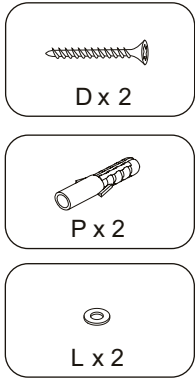
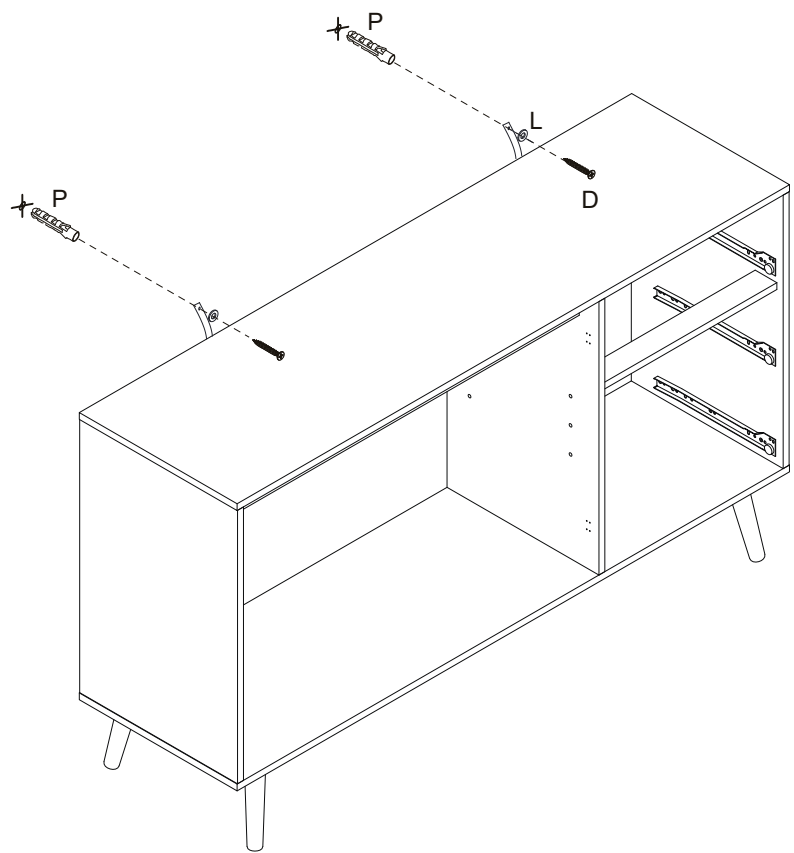
STEP 9



STEP 10

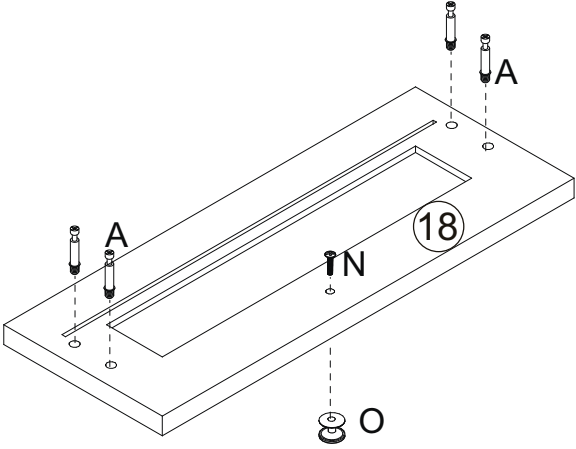
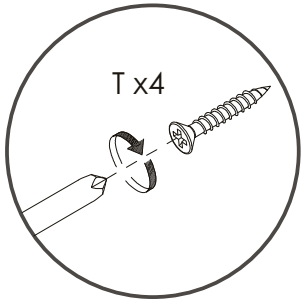
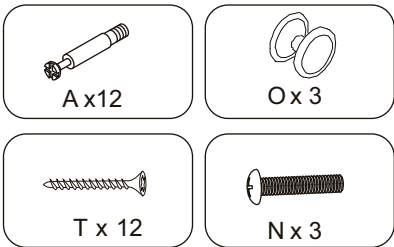
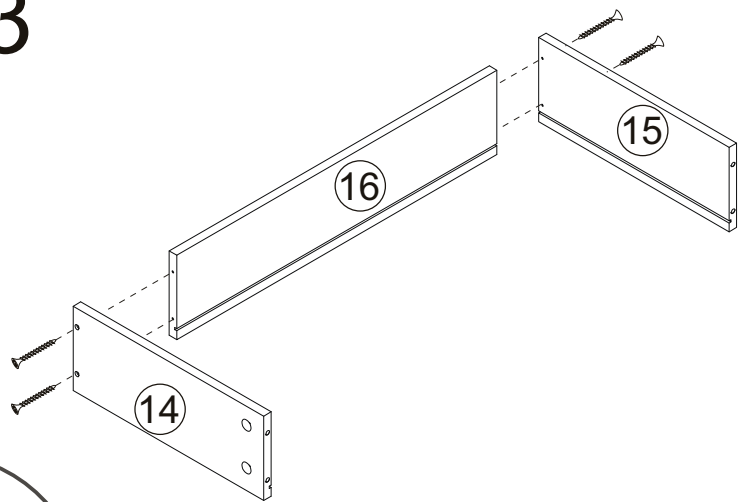


STEP 11



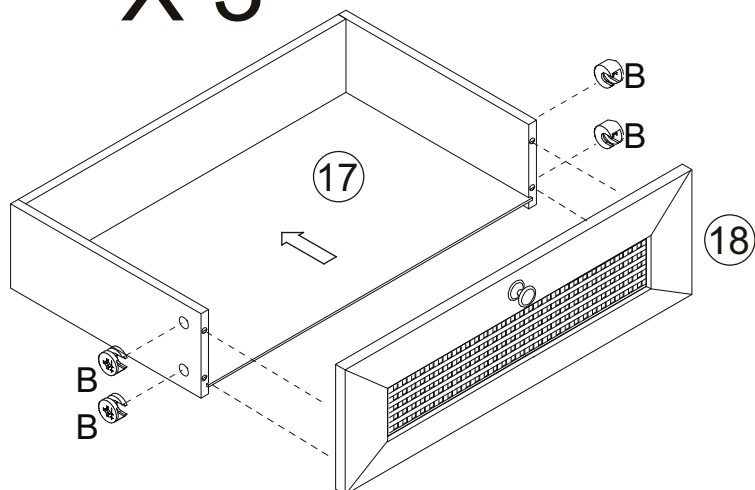
STEP 12

X 3

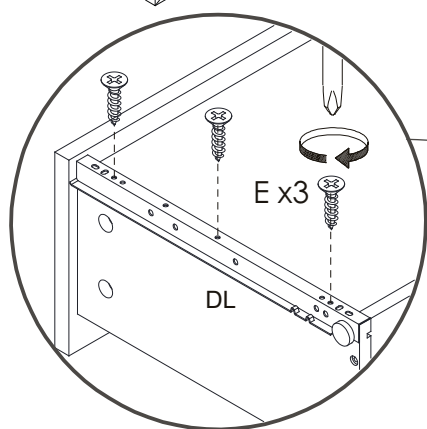


STEP 13

X 3

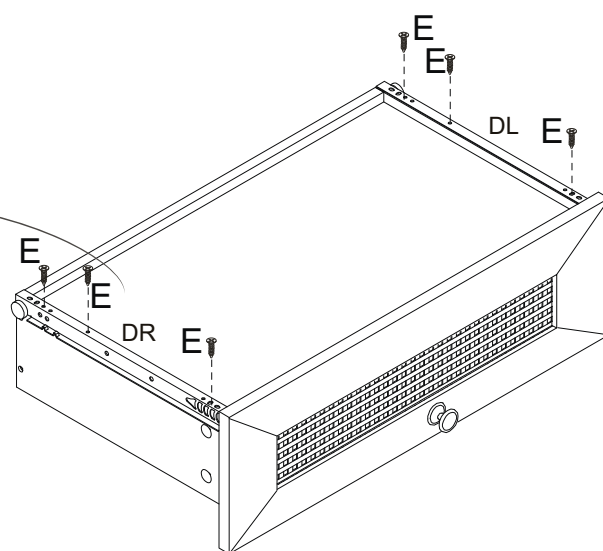


B
B



E x3

DL



E

E

DL

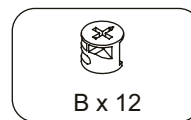
E

E

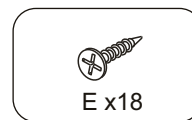
E

DR

E



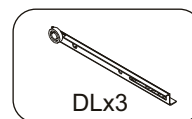
B x 12



E x 18

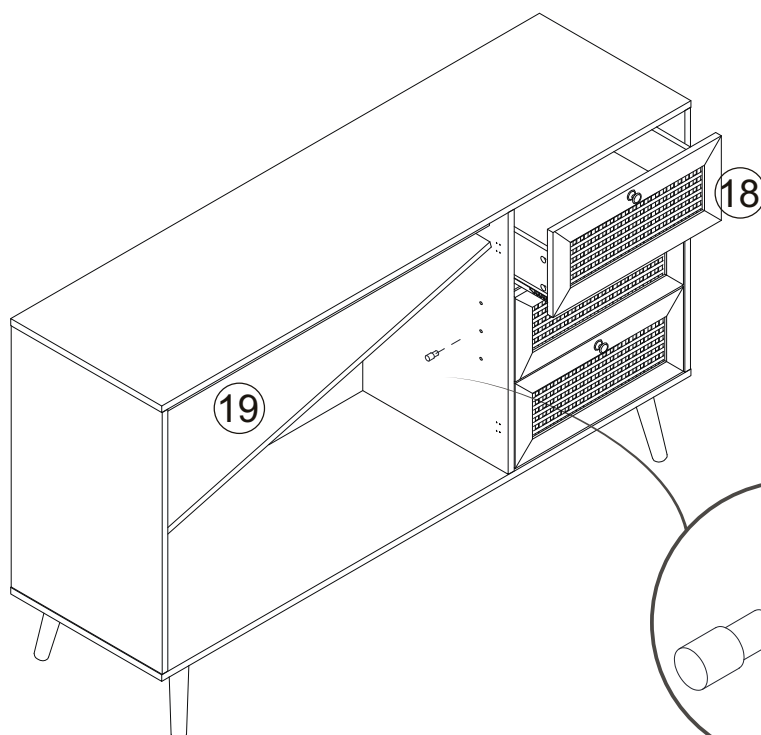


DR x 3



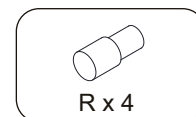
DL x 3

STEP 14

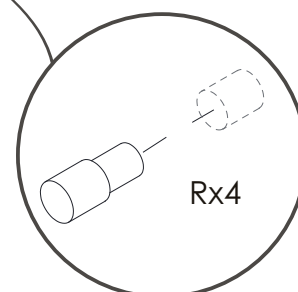
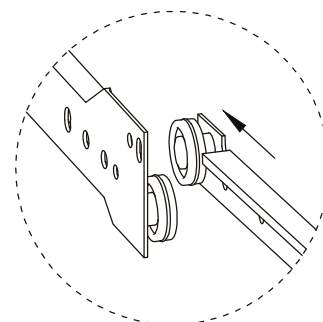


18

19



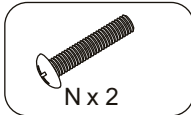
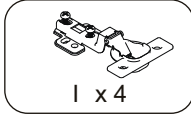
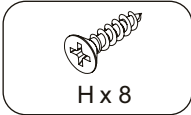
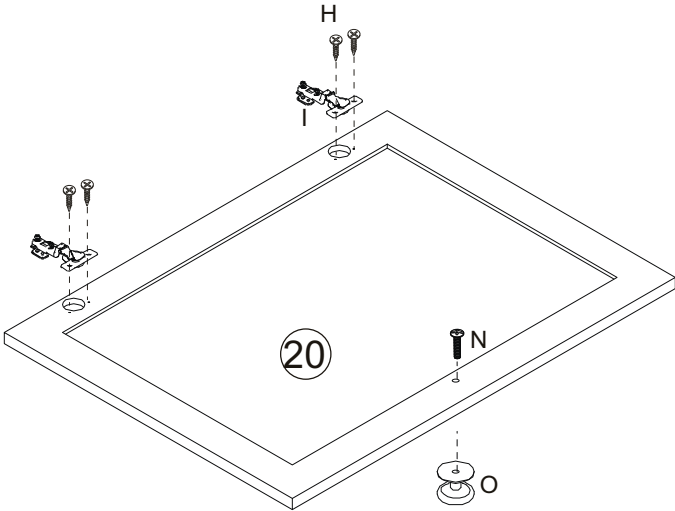
R x 4



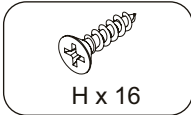
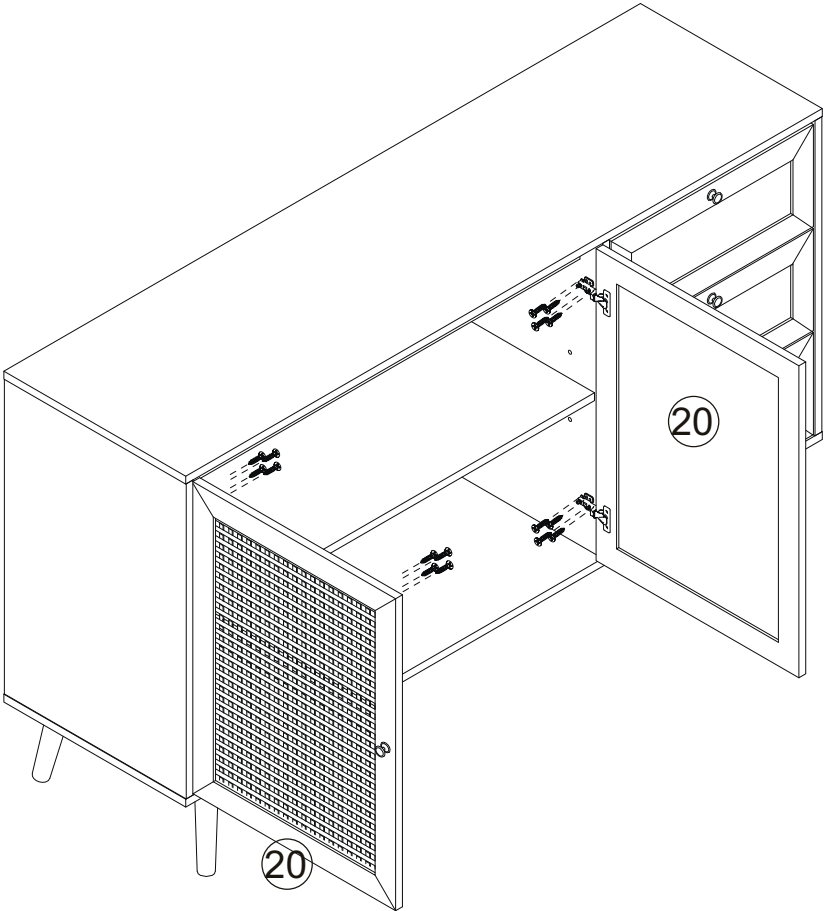
R x 4

STEP 15

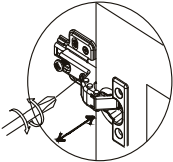
X 2



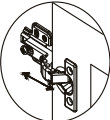
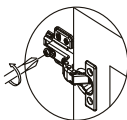
STEP 16



If the door can't close, please adjust the hinges.



This is used to adjust the door panel in the up and down direction.



This is used to adjust the door panel in the front and back direction: Loosen the screw first, and then tighten screw after adjusting the door panel to the proper position.