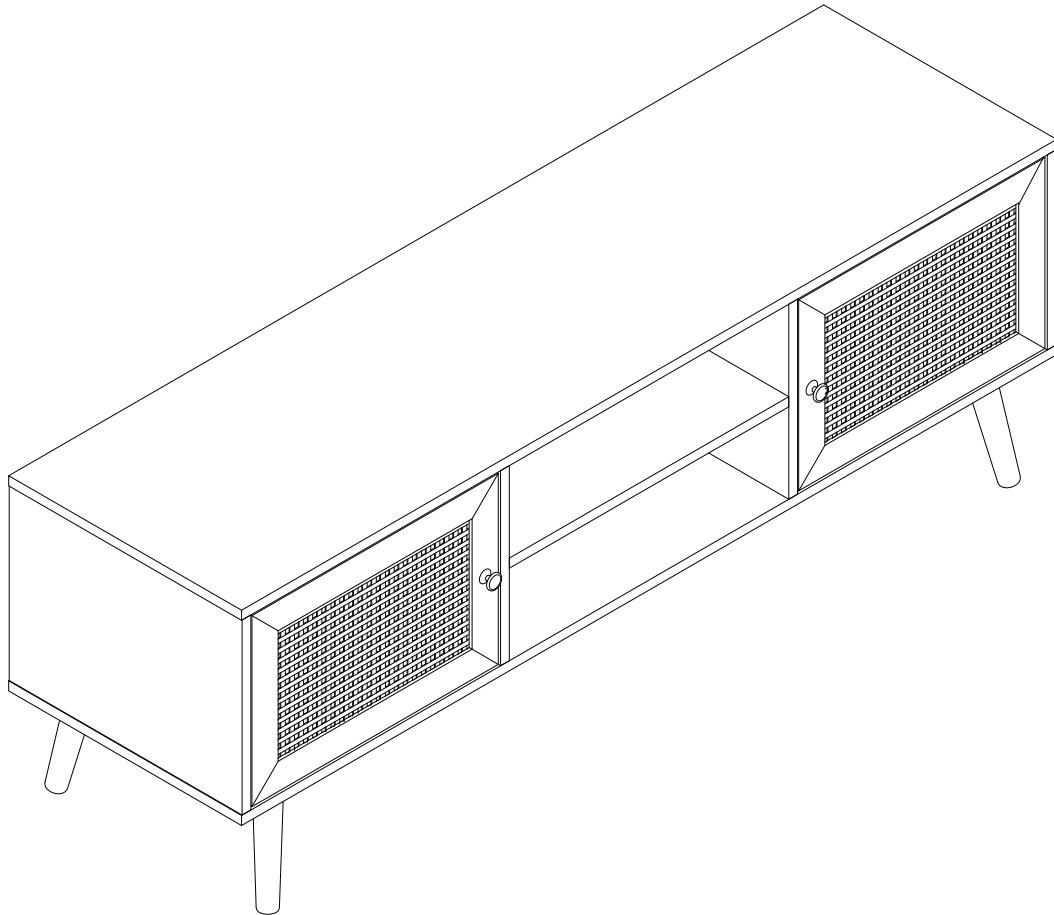
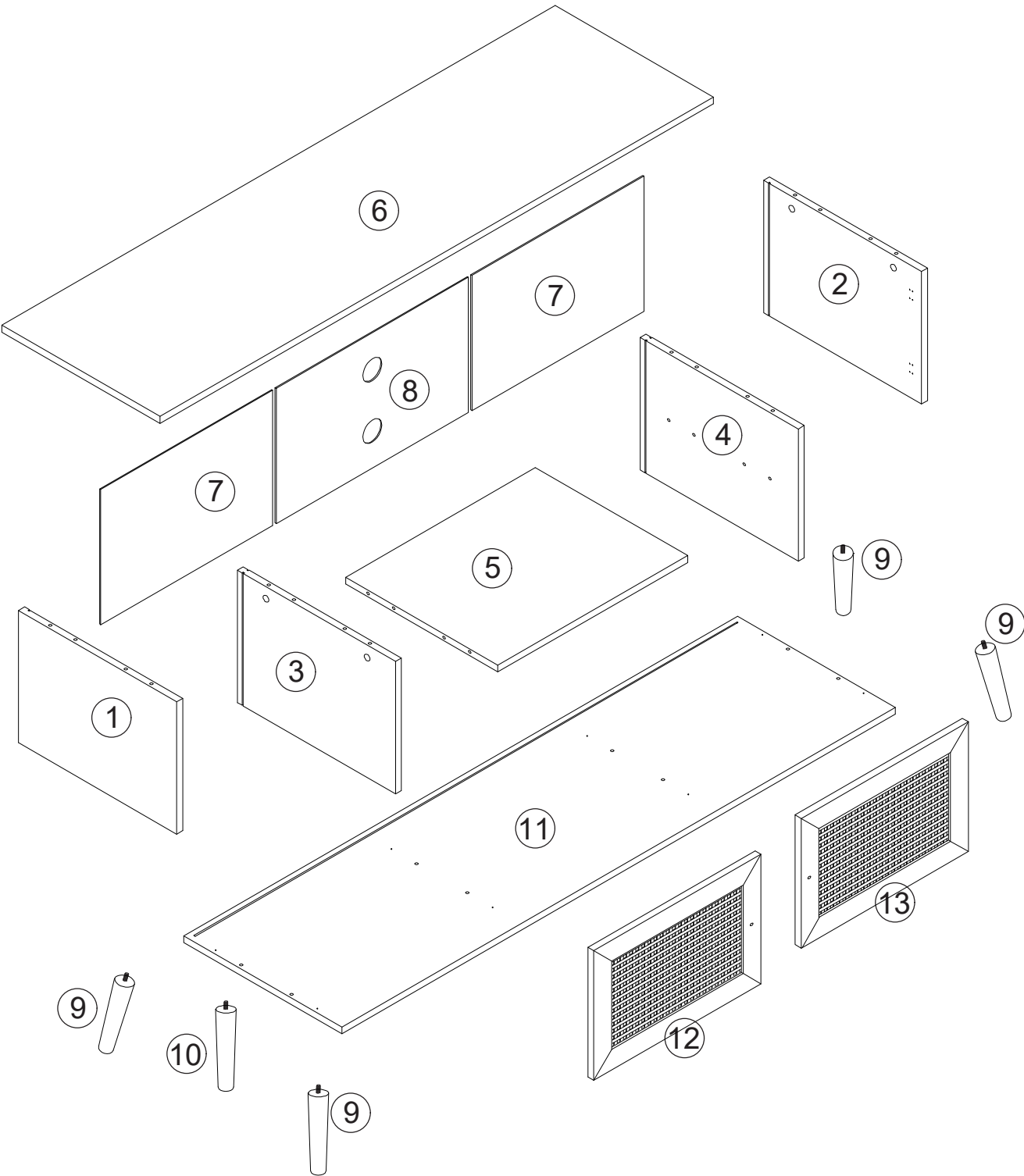


BLŪ
west

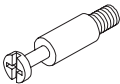

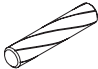

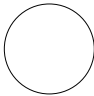
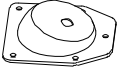

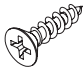
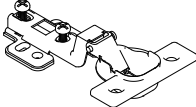



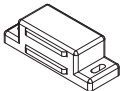
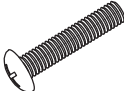




ASSEMBLY INSTRUCTION
81202.Z.02

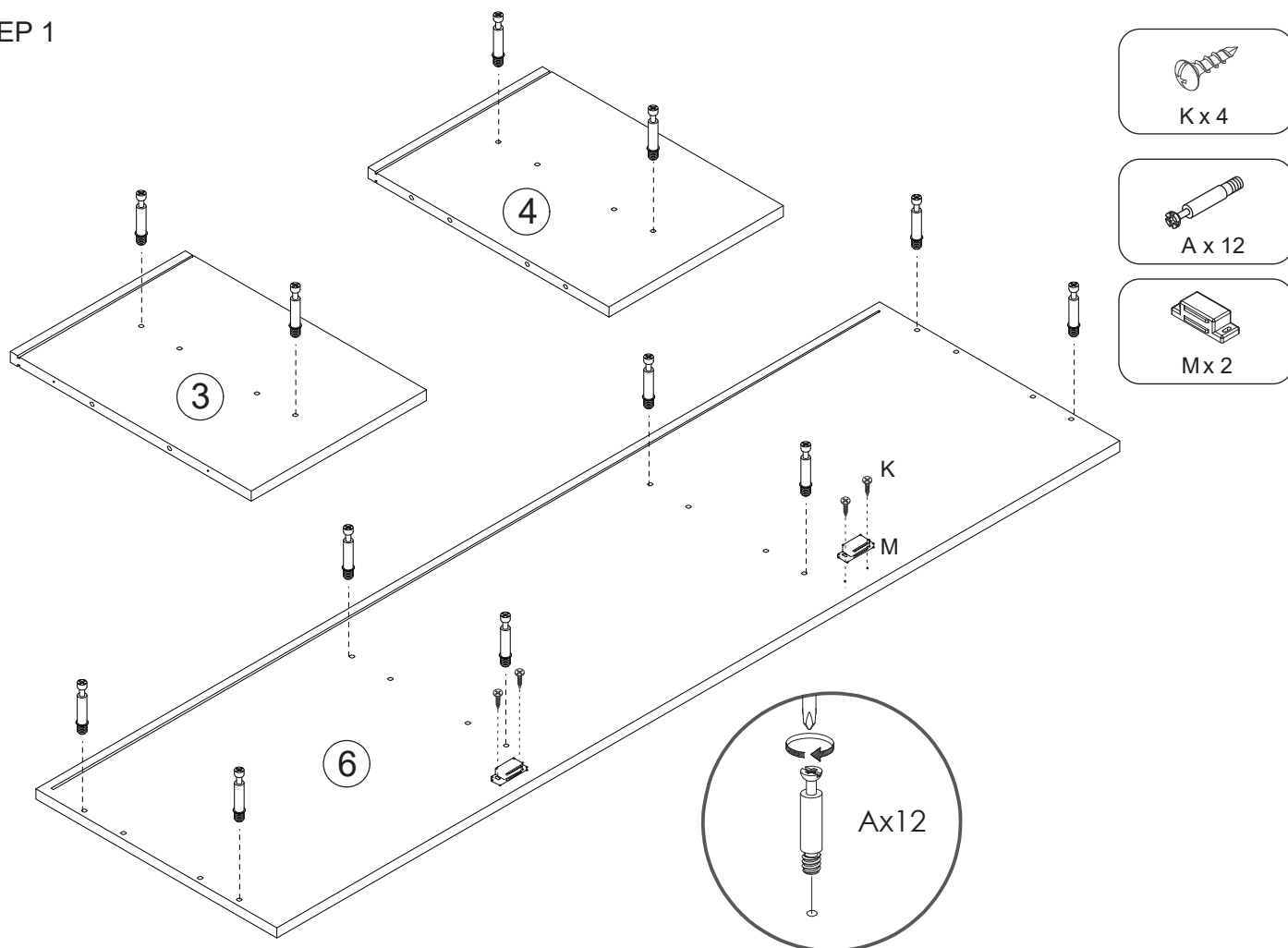
PARTS LIST



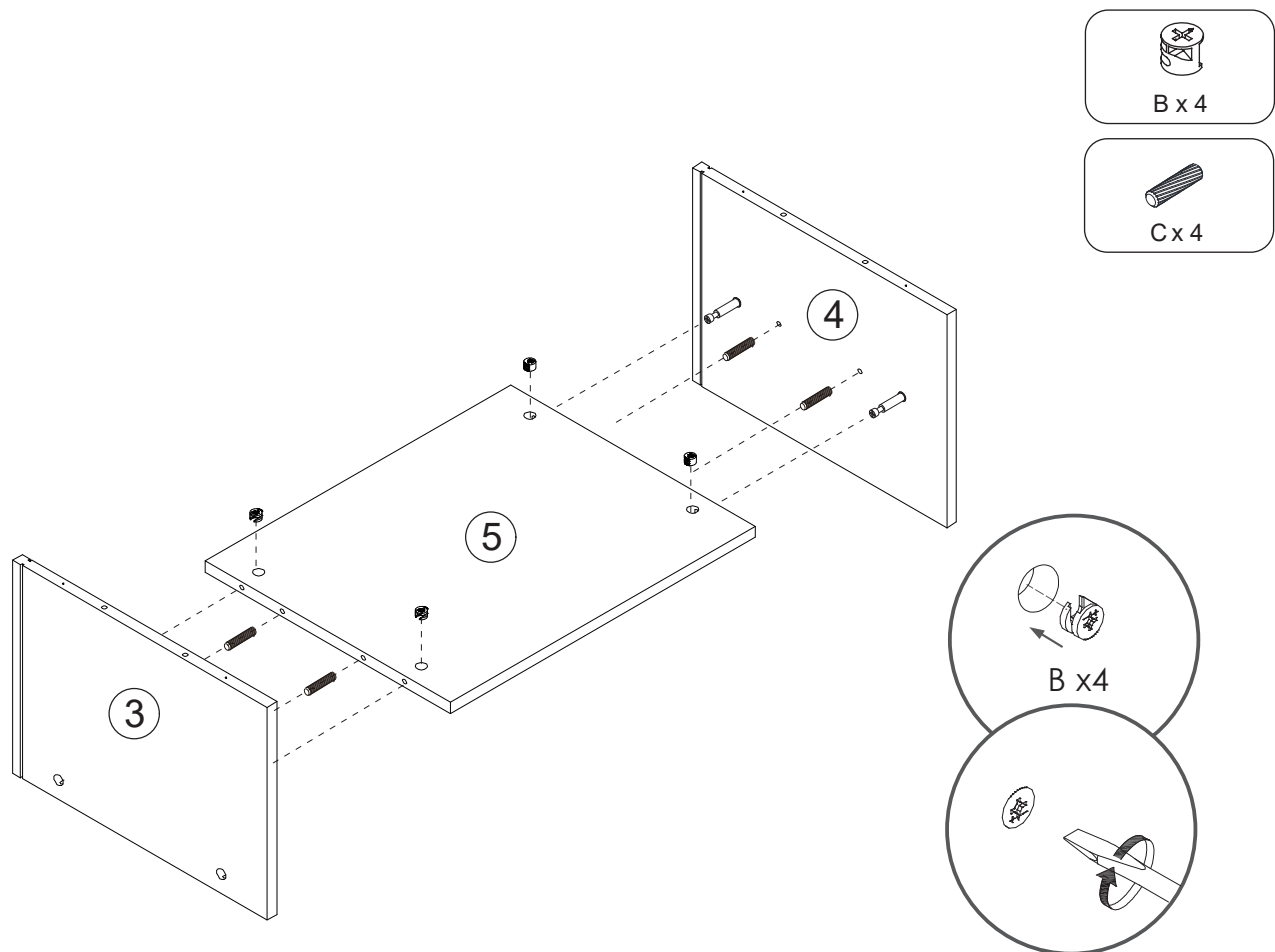
Hardware:

<div>A</div> <div>M6*35 mm</div> <div></div> <div>x12</div>	<div>B</div> <div>M15*10 mm</div> <div></div> <div>x12</div>	<div>C</div> <div>M5.8*30 mm</div> <div></div> <div>x20</div>	<div>D</div> <div>M4*35mm</div> <div></div> <div>x8</div>	<div>E</div> <div></div> <div></div> <div>x4</div>
<div>F</div> <div></div> <div></div> <div>x4</div>	<div>G</div> <div>M4*14 mm</div> <div></div> <div>x20</div>	<div>H</div> <div>M4*14 mm</div> <div></div> <div>x24</div>	<div>I</div> <div></div> <div></div> <div>x4</div>	<div>J</div> <div></div> <div></div> <div>x2</div>
<div>K</div> <div>M3*14 mm</div> <div></div> <div>x4</div>	<div>L</div> <div>M3*12 mm</div> <div></div> <div>x2</div>	<div>M</div> <div></div> <div></div> <div>x2</div>	<div>N</div> <div>M4*16mm</div> <div></div> <div>x2</div>	<div>O</div> <div></div> <div></div> <div>x2</div>
<div>P</div> <div></div> <div></div> <div>x1</div>				

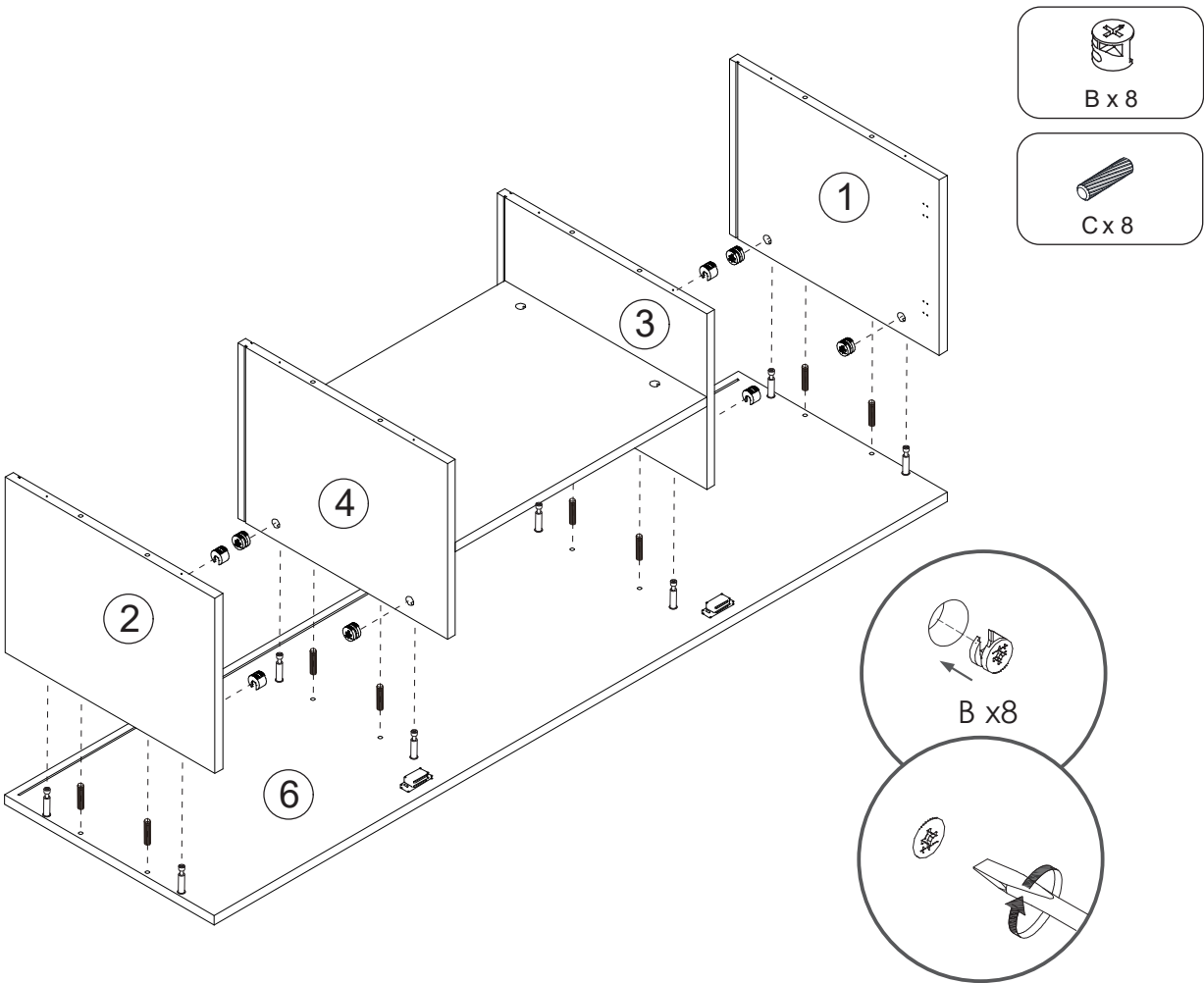
STEP 1



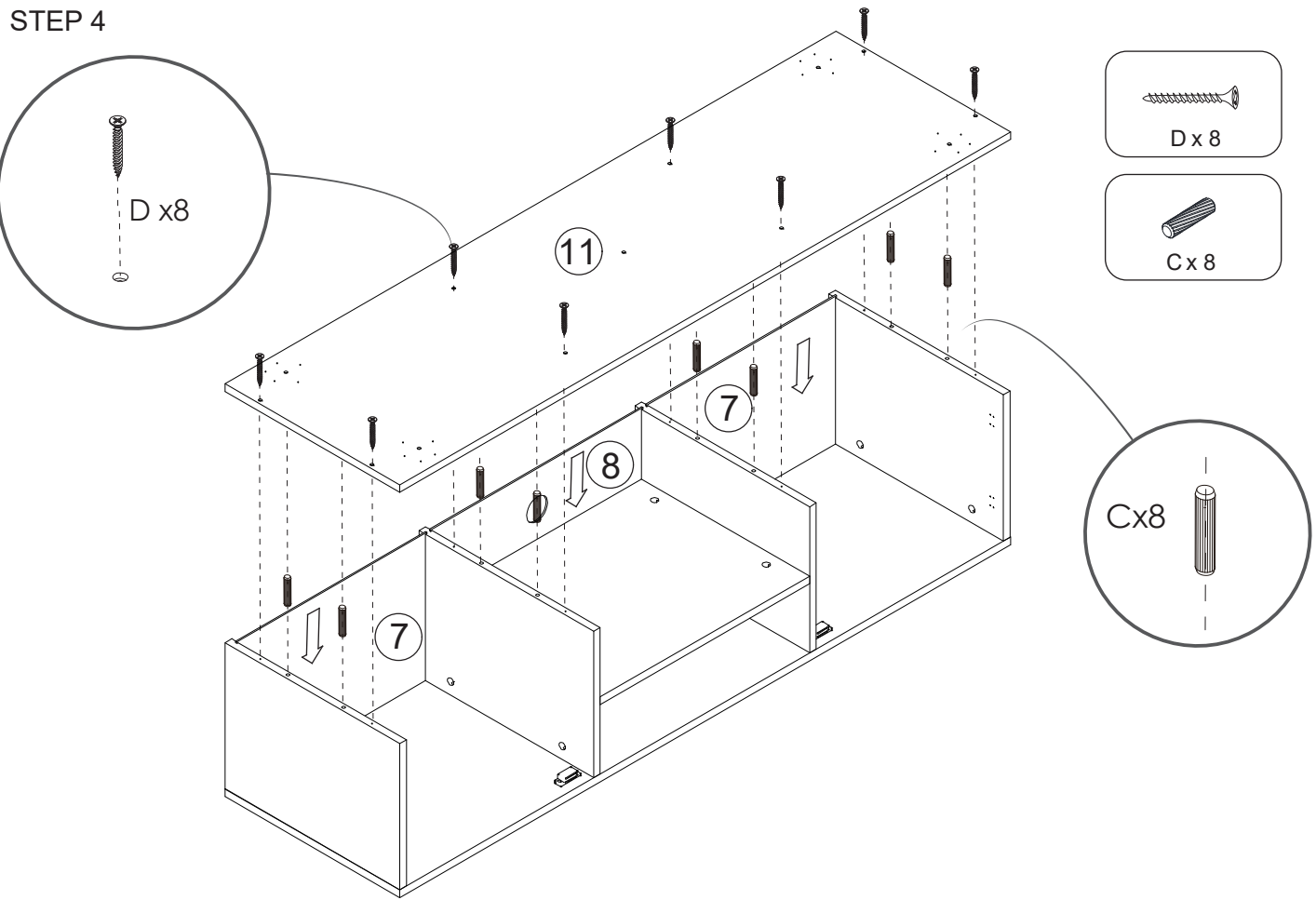
STEP 2



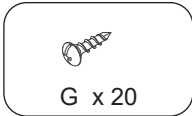
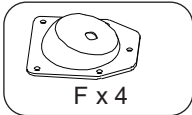
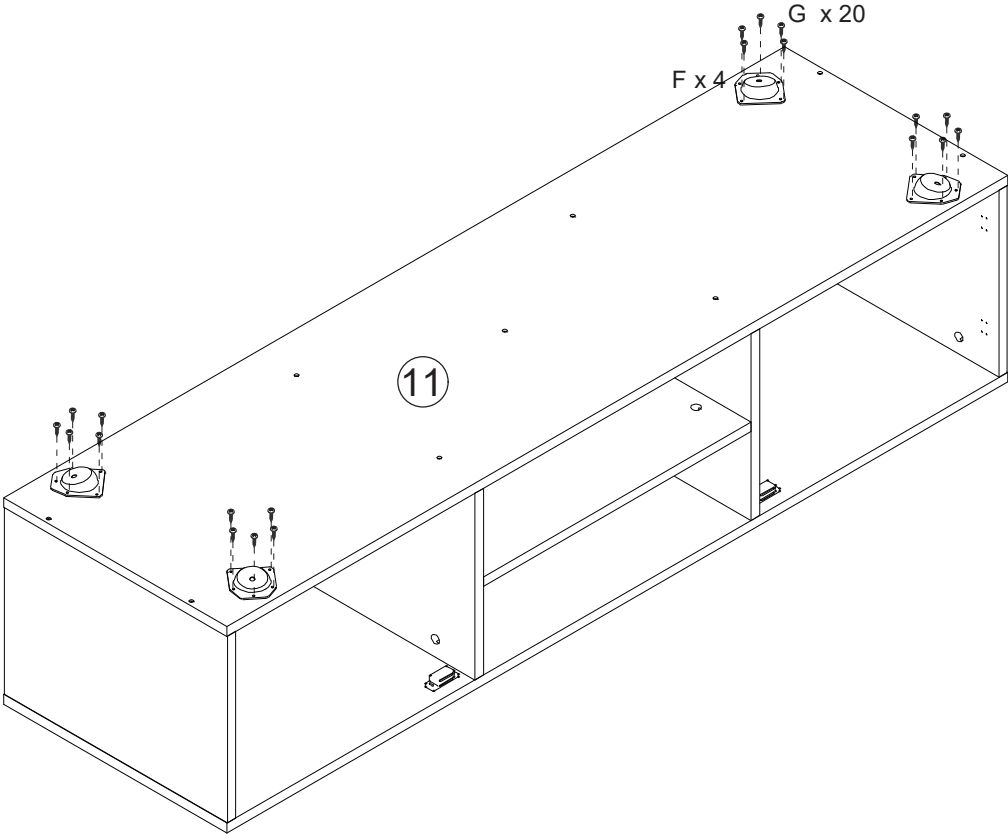
STEP 3



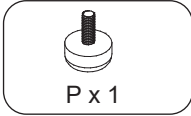
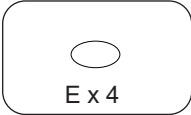
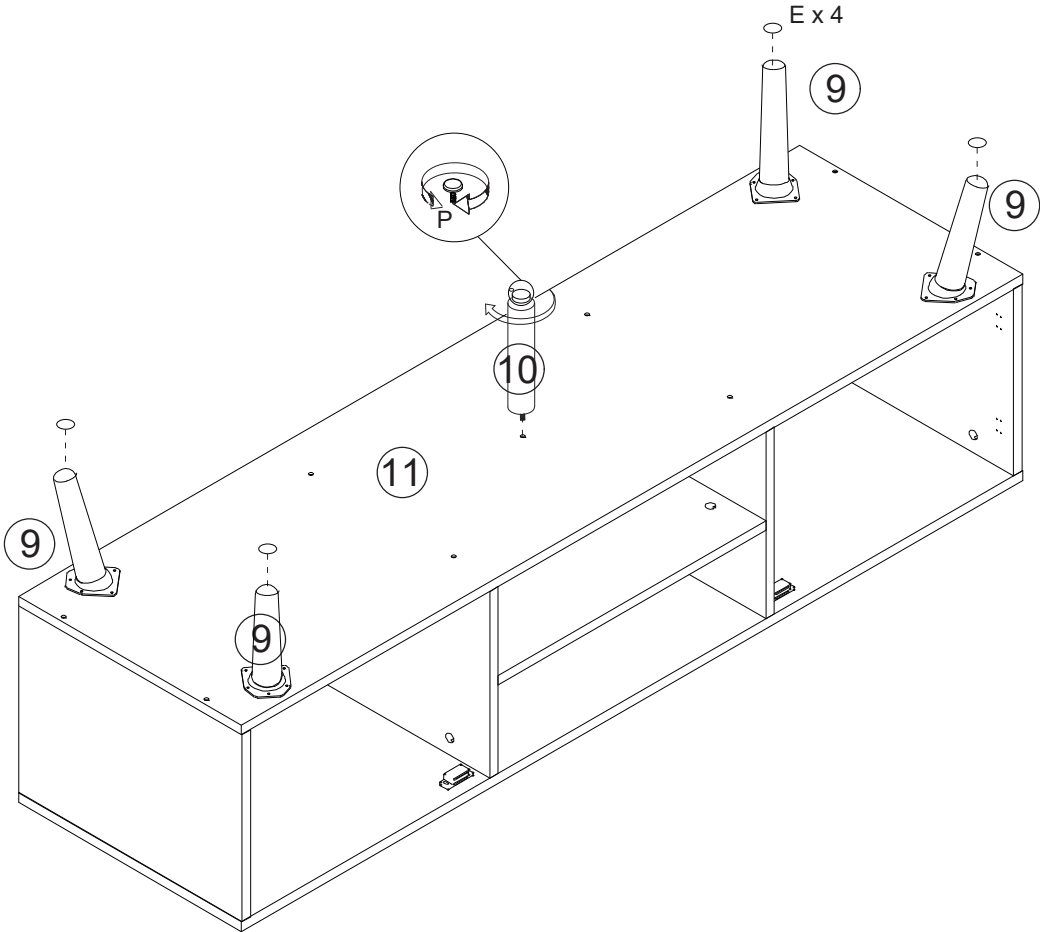
STEP 4



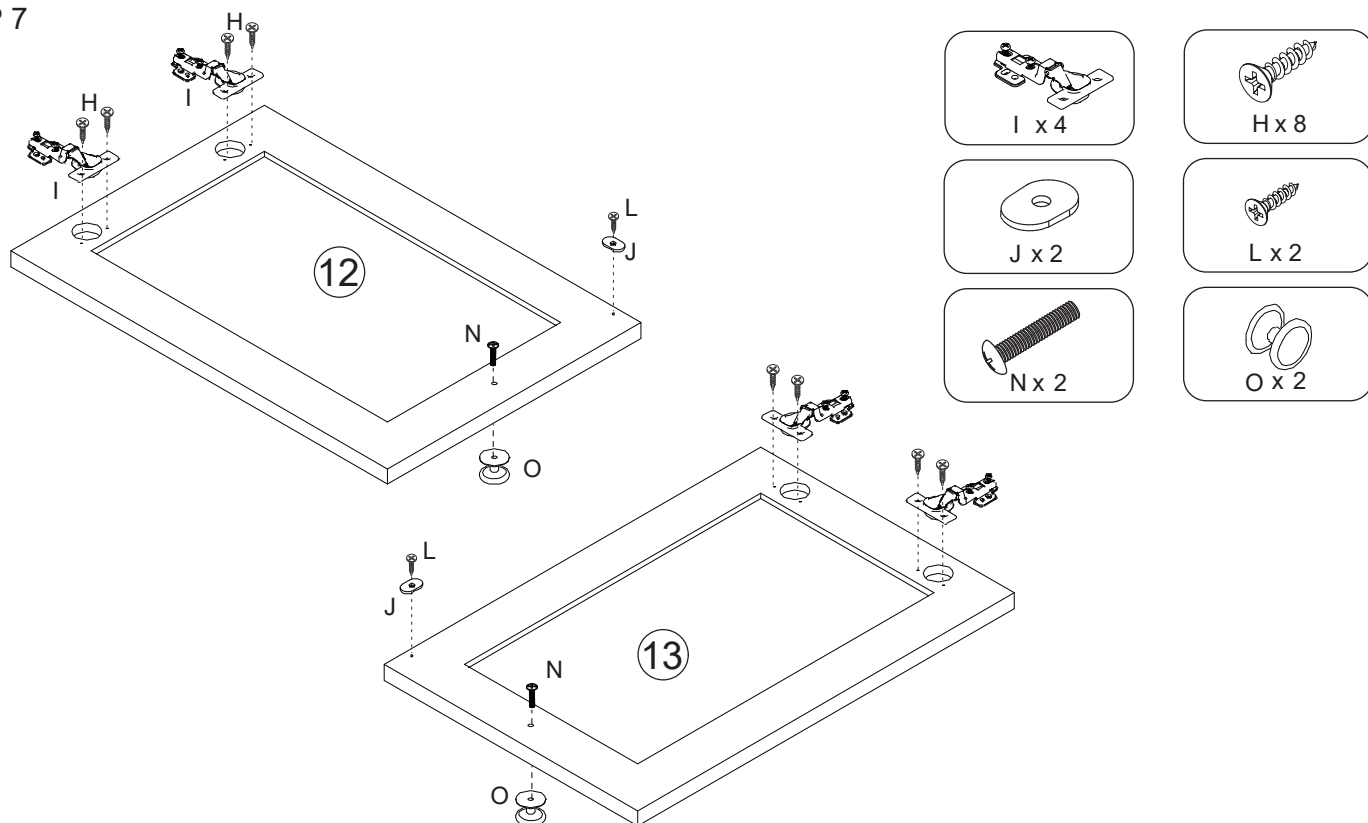
STEP 5



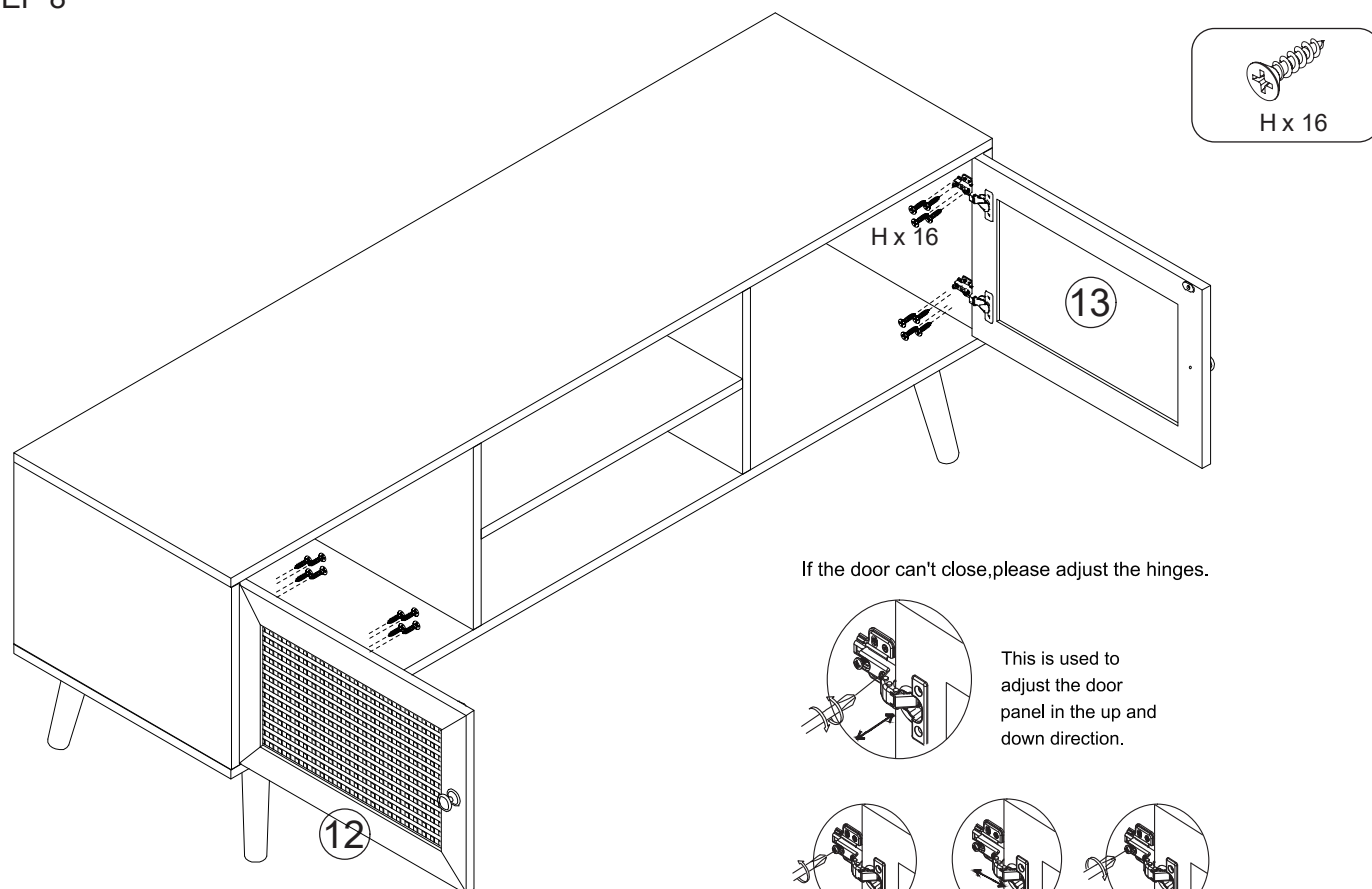
STEP 6



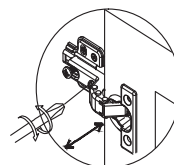
STEP 7



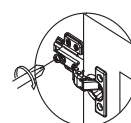
STEP 8



If the door can't close, please adjust the hinges.



This is used to adjust the door panel in the up and down direction.



This is used to adjust the door panel in the front and back direction: Loosen the screw first, and then tighten screw after adjusting the door panel to the proper position.